

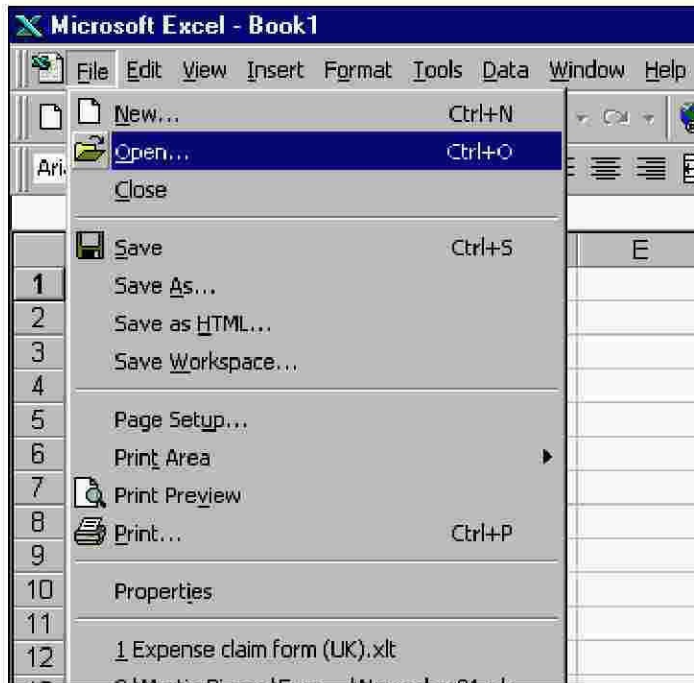
How to Open ScreenMaster Data Files Using Microsoft Excel

Step 1

Open Microsoft Excel

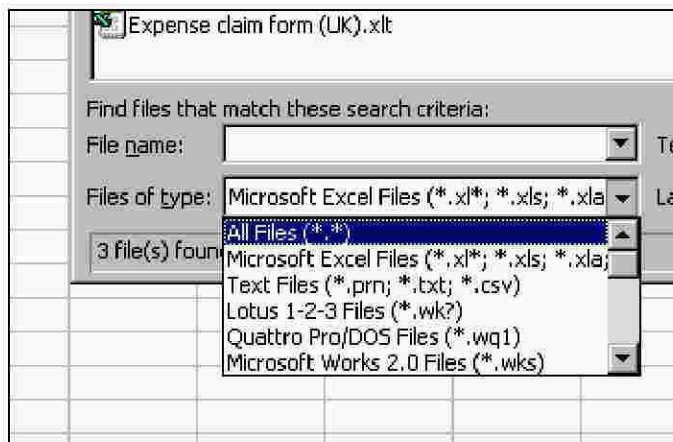
Step 2

Select 'Open' from the 'File' Menu



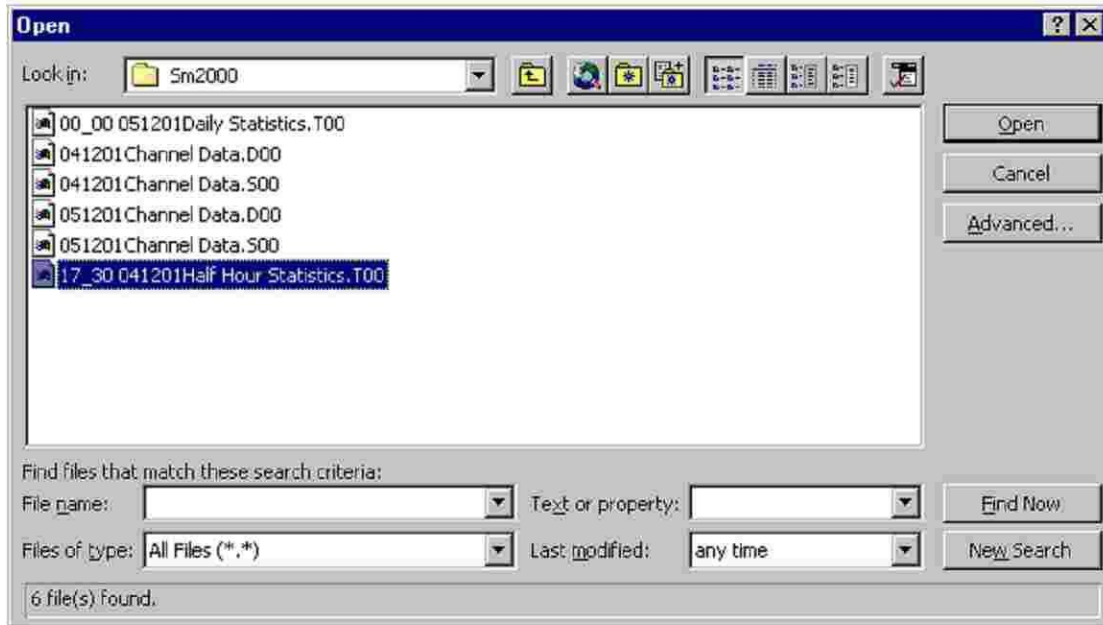
Step 3

Select 'All Files (*.*)' from the 'Files of type' menu.



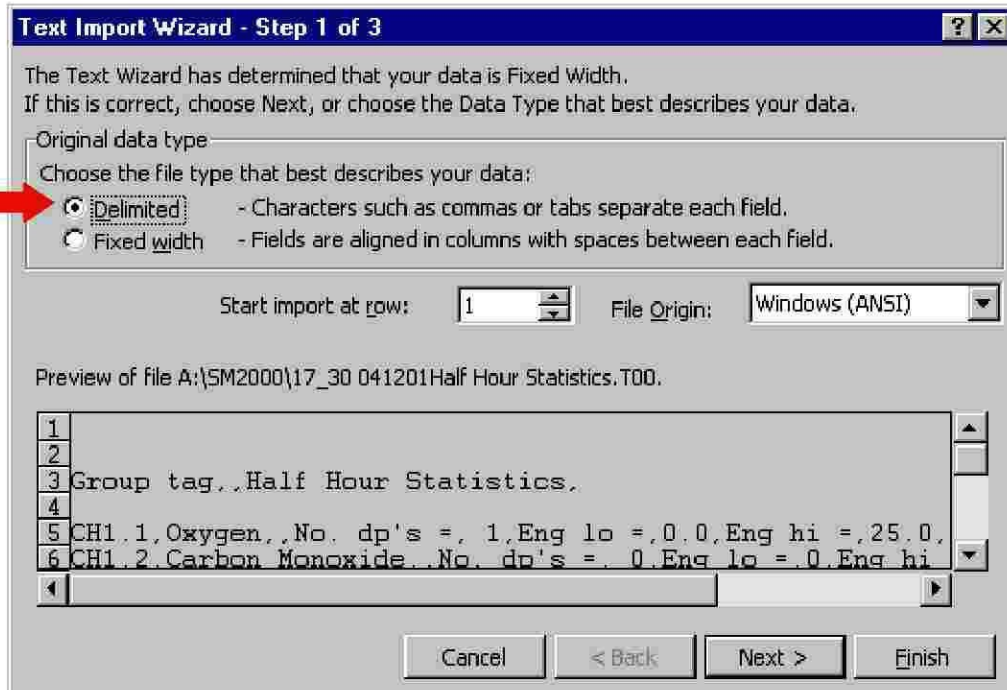
Step 4

Locate and open the file that you wish to view.



Step 5

In step 1 of the 'Text Import Wizard' select 'Delimited' then click 'Next'.



Step 6

In step 2 of the 'Text Import Wizard' select 'Comma' 'Delimiters' then click 'Finish'.

This screen lets you set the delimiters your data contains. You can see how your text is affected in the preview below.

Delimiters

Tab Semicolon Comma Treat consecutive delimiters as one

Space Other: Text Qualifier:

Data preview

Group tag	Half Hour Statistics
CH1.1	Oxygen
CH1.2	Carbon Monoxide

Cancel < Back Next > Finish

Step 7

Your data will now be displayed as an Excel spreadsheet.

Microsoft Excel - 17_30_041201Half Hour Statistics 100

Date	Time	Totalizer T	Source tag	Batch Tot	Total units	Max value	Min value	Average	Units	Secure Tot	Events
04/12/01	17:30:00	Oxygen	Oxygen	0	0 %	14.1	9.1	11.6 %		0	Reset
04/12/01	17:30:00	Carbon Monoxide	Carbon M	0	0 PPM	562	364	463 PPM		0	Reset
04/12/01	17:30:00	Particulate	Particul	0	0 mg/m3	141	91	116 mg/m3		0	Reset
04/12/01	17:30:00	Secondary Chamber	Sec Temp	0	0 °C	123	123	123 °C		0	Reset
04/12/01	17:30:00	Primary Chamber	ClPrn Temp	0	0 °C	25	25	25 °C		0	Reset
04/12/01	18:30:00	Oxygen	Oxygen	0	0 %	14.1	9.1	11.6 %		0	Reset
04/12/01	18:30:00	Carbon Monoxide	Carbon M	0	0 PPM	562	364	463 PPM		0	Reset
04/12/01	18:30:00	Particulate	Particul	0	0 mg/m3	141	91	116 mg/m3		0	Reset
04/12/01	18:30:00	Secondary Chamber	Sec Temp	0	0 °C	123	123	123 °C		0	Reset
04/12/01	18:30:00	Primary Chamber	ClPrn Temp	0	0 °C	25	25	25 °C		0	Reset
04/12/01	19:00:00	Oxygen	Oxygen	0	0 %	14.1	9.1	11.6 %		0	Reset
04/12/01	19:00:00	Carbon Monoxide	Carbon M	0	0 PPM	562	364	463 PPM		0	Reset
04/12/01	19:00:00	Particulate	Particul	0	0 mg/m3	141	91	116 mg/m3		0	Reset
04/12/01	19:00:00	Secondary Chamber	Sec Temp	0	0 °C	123	123	123 °C		0	Reset
04/12/01	19:00:00	Primary Chamber	ClPrn Temp	0	0 °C	25	25	25 °C		0	Reset
04/12/01	19:30:00	Oxygen	Oxygen	0	0 %	14.1	9.1	11.6 %		0	Reset
04/12/01	19:30:00	Carbon Monoxide	Carbon M	0	0 PPM	562	364	463 PPM		0	Reset
04/12/01	19:30:00	Particulate	Particul	0	0 mg/m3	141	91	116 mg/m3		0	Reset
04/12/01	19:30:00	Secondary Chamber	Sec Temp	0	0 °C	123	123	123 °C		0	Reset
04/12/01	19:30:00	Primary Chamber	ClPrn Temp	0	0 °C	25	25	25 °C		0	Reset